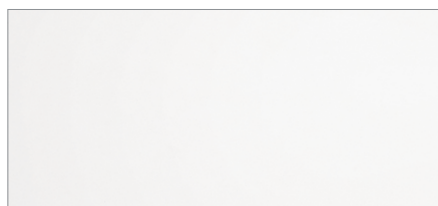


# Colour Hardener

NUVOLATO ARCHITOP®, STENCILTOP, STAMPED CONCRETE



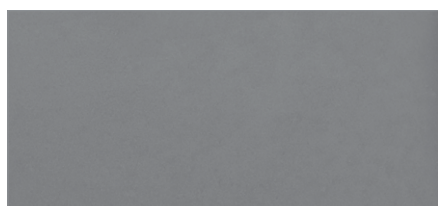
**Bianco**  
HARD-BIA



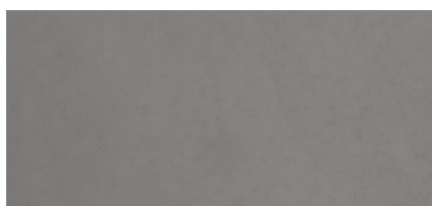
**Pewter**  
HARD-PEW



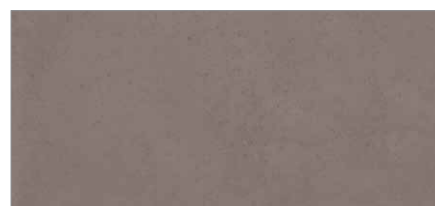
**Zinco**  
HARD-ZIN



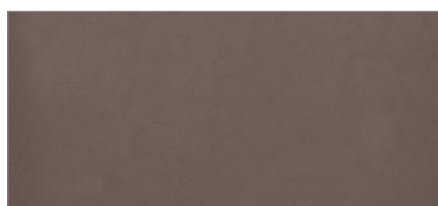
**Cenere**  
HARD-CEN



**Antracite**  
HARD-ANTR



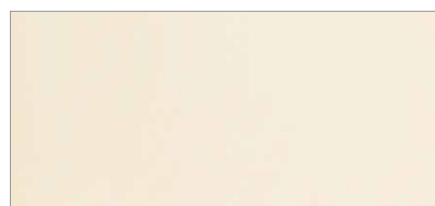
**Gray**  
HARD-GRA



**Carboncino**  
HARD-CAR



**Black**  
HARD-BLA



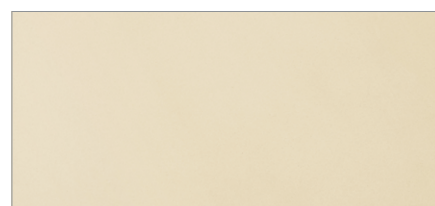
**Sand**  
HARD-XSAND



**Corda**  
HARD-CORDA



**Bourgogne**  
HARD-BOU



**Salvstone**  
HARD-SAL



**Harvest Sand**  
HARD-HAR



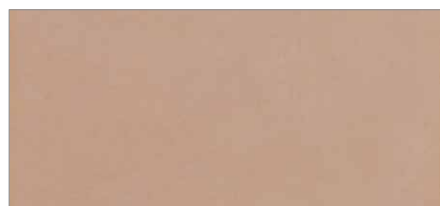
**Yellow Buff**  
HARD-YEL



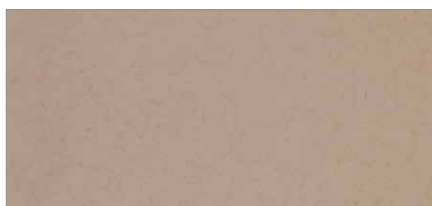
**Sun Buff**  
HARD-SUN

# Colour Hardener

NUVOLATO ARCHITOP®, STENCILTOP®, STAMPED CONCRETE



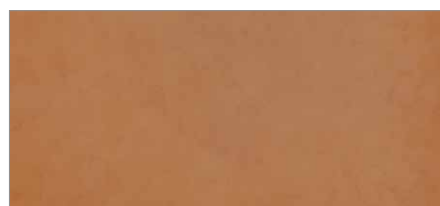
**Nocciola**  
HARD-NOC



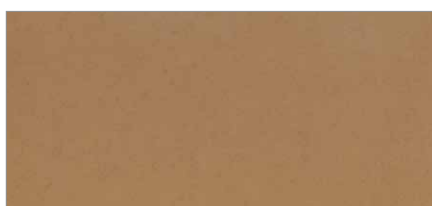
**Caffè**  
HARD-CAF



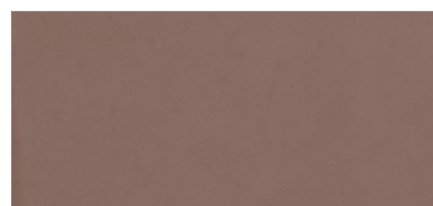
**Mapplewood**  
HARD-MAP



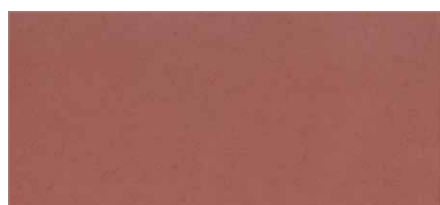
**Cuoio**  
HARD-CUO



**Desert Tan**  
HARD-DES



**Marrone**  
HARD-MAR



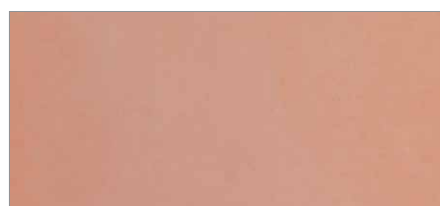
**Redwood**  
HARD-RED



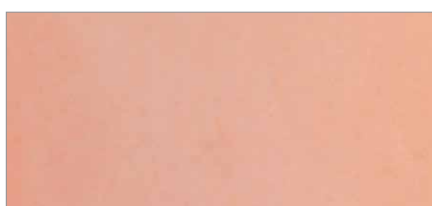
**Cotto**  
HARD-COT



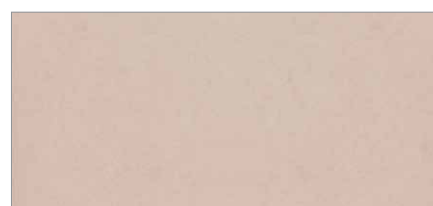
**Pesca**  
HARD-PES



**Rosa**  
HARD-ROS



**Coral**  
HARD-COR



**Cream**  
HARD-CRE



**Celeste**  
HARD-CEL



**Acqua Marina**  
HARD-ACQ



**Green**  
HARD-GRE

# Colour Hardener

NUVOLATO ARCHITOP®, STENCILTOP, STAMPED CONCRETE



**Sand Buff**  
HARD-SAN